



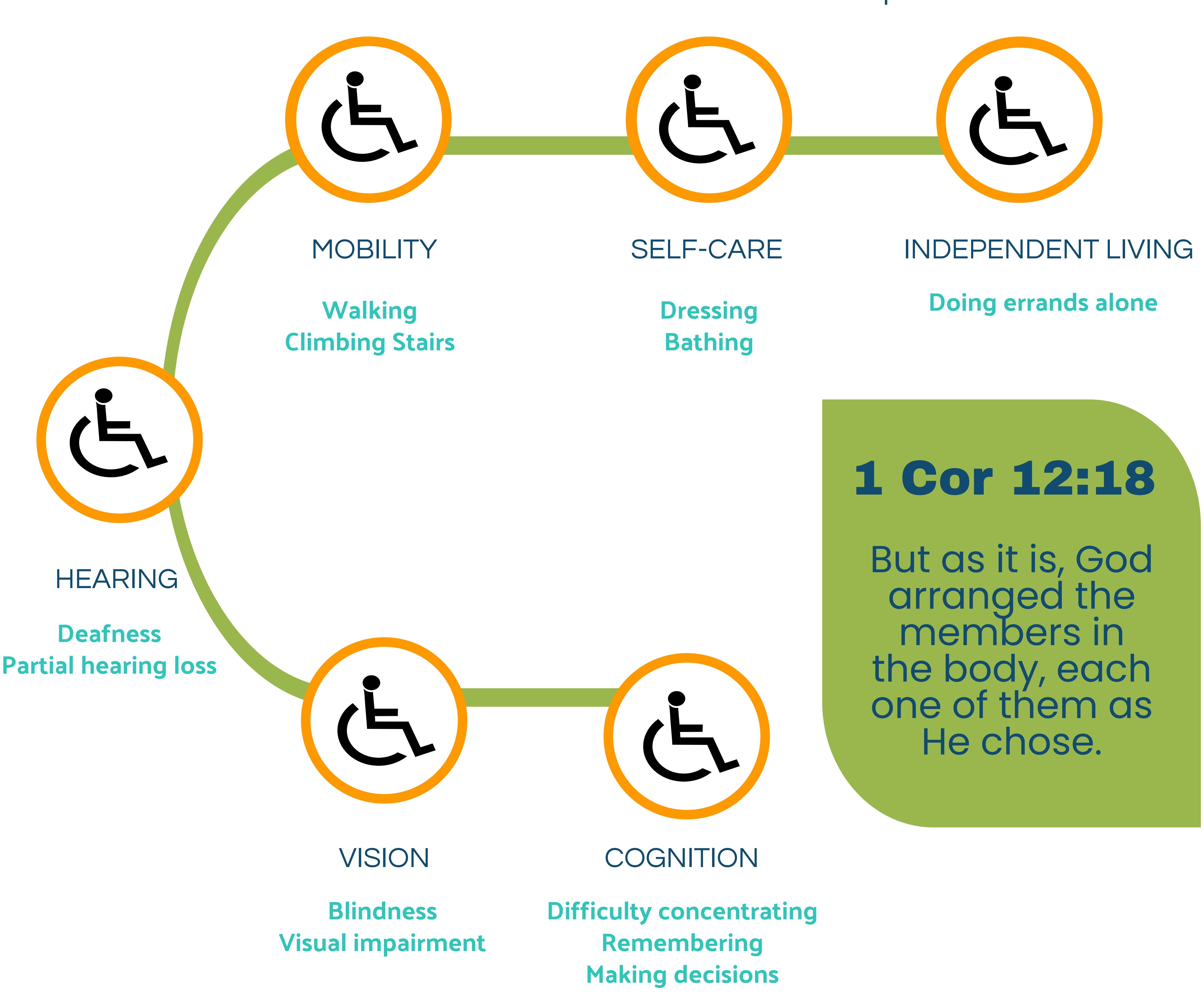
# Persons with Disabilities are Indispensable.

The effects of sin inflict brokenness upon everybody, not just those with visibly diagnosed disabilities.

## DISABILITY ISSUES

### Uniquely You

Not all disabilities are identical, and the experiences of different disabilities are as different as the individuals who experience them.



**1 Cor 12:18**  
But as it is, God arranged the members in the body, each one of them as He chose.

## WHAT TO KNOW



61 million people, about 1 in 4 persons, have an intellectual, developmental, mobility, or age-related disability.



Disability becomes more common with age, affecting about 2 in 5 adults age 65 and older.



60% of childhood hearing loss is due to preventable causes.

### Rom 12:5-6

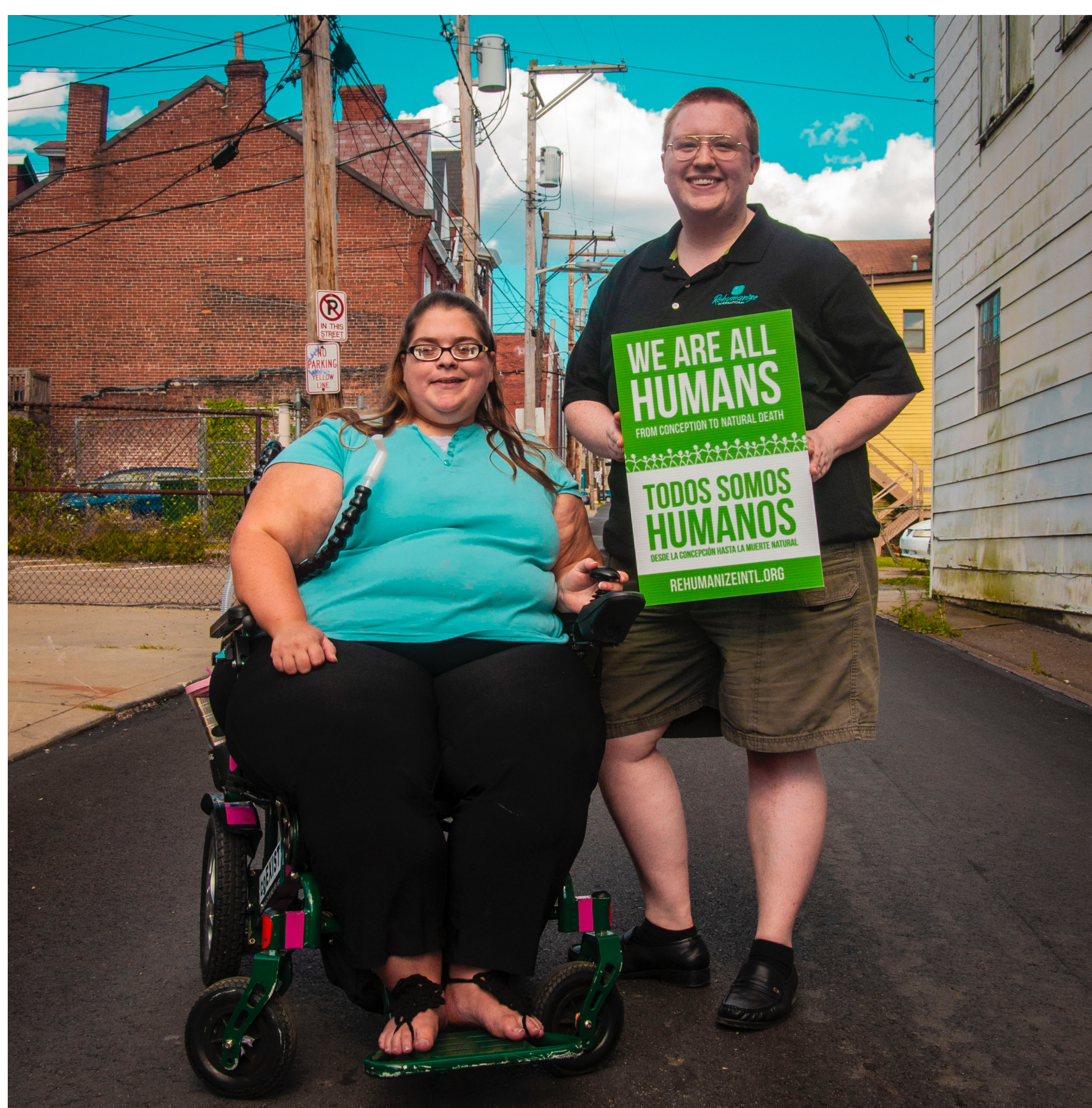
...so we, though many, are one body in Christ, and individually members one of another. Having gifts that differ according to the grace given to us, let us use them...

## OUR CHRISTIAN RESPONSE

### Loving My Neighbor

- We include people with disabilities among our authentic relationships and friendships.
- We use people-first language when speaking about persons with disabilities - Mary, who has autism, rather than "the disabled."
- We recognize the effects of sin have inflicted brokenness upon everybody, not just those with diagnosed or visible disabilities.

**1 Pet 4:10**  
As each has received a gift, use it to serve one another, as good stewards of God's varied grace...



**#YOU ARE indispensable**  
**#ASK ME WHY**